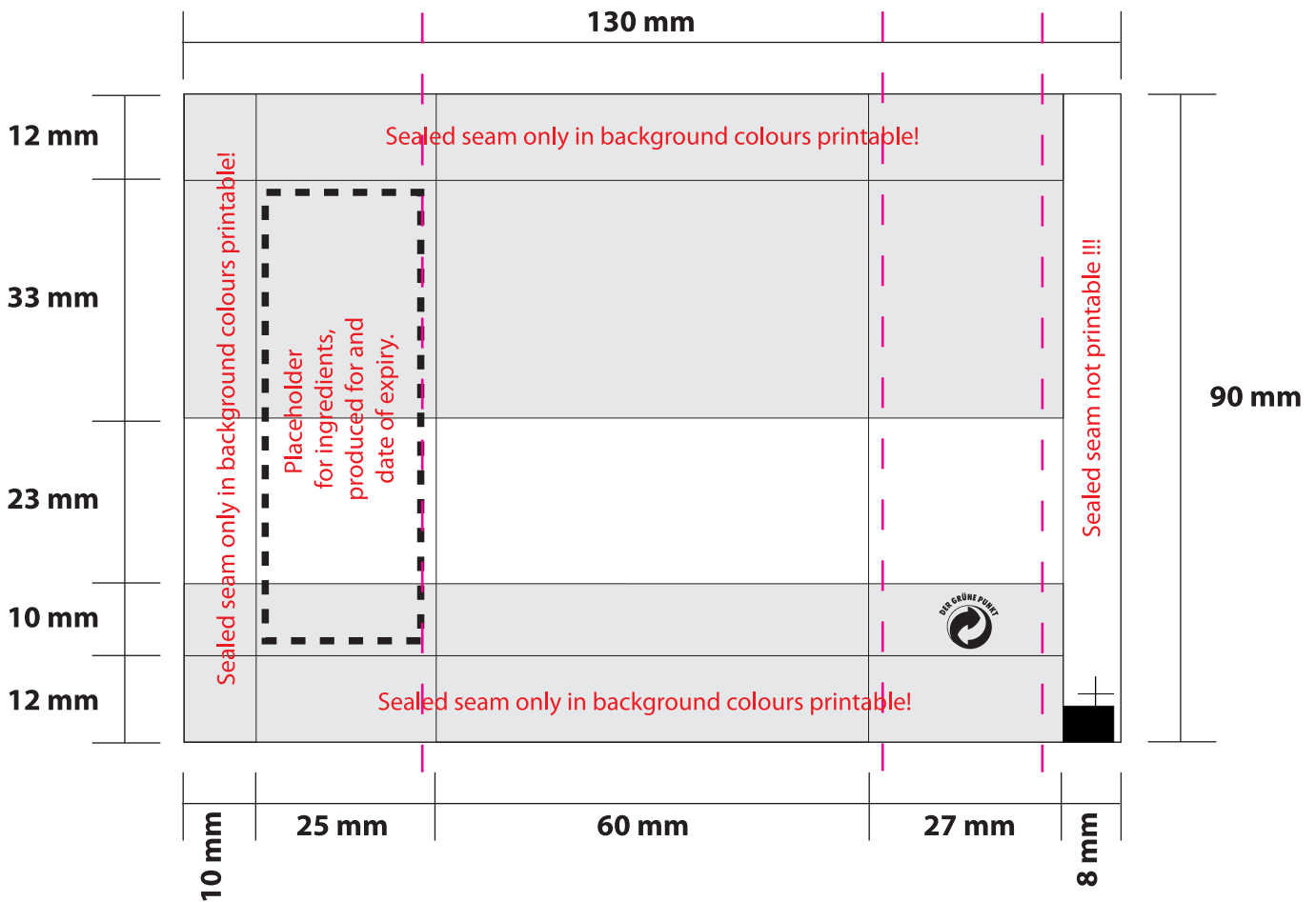


Layout

Promotion bag

60 x 90 mm

white square 5



File format:

EPS, AI, FH, Tiff, INDD, Mac Data if possible PC-compatible

Data:

Graphics and **text** have to be converted in vectors, please embed **pictures** and include the original data. Rendition 1:1: line motives in 1200 dpi and half-tone pictures in 300 dpi.
Graphics, clip arts etc. have to be composed in paths and should be capable for editing.

Colours:



Indicate pure colours as **Pantone C** or **HKS K, 4c euro scale prints** in %-values

Important: For 4c euro scale we send you a binding colour proof via mail.

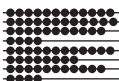
(additional costs for the proof: € 60,-)

Printing colours are always translucent, to get covering colours on transparent films, they have to be deposited with white. Use our white squares!

Fonts:

Texts have to be converted in vectors to avoid the installation of non-operating fonts. If this is not possible, please send the fonts (only PC fonts)

Raster width



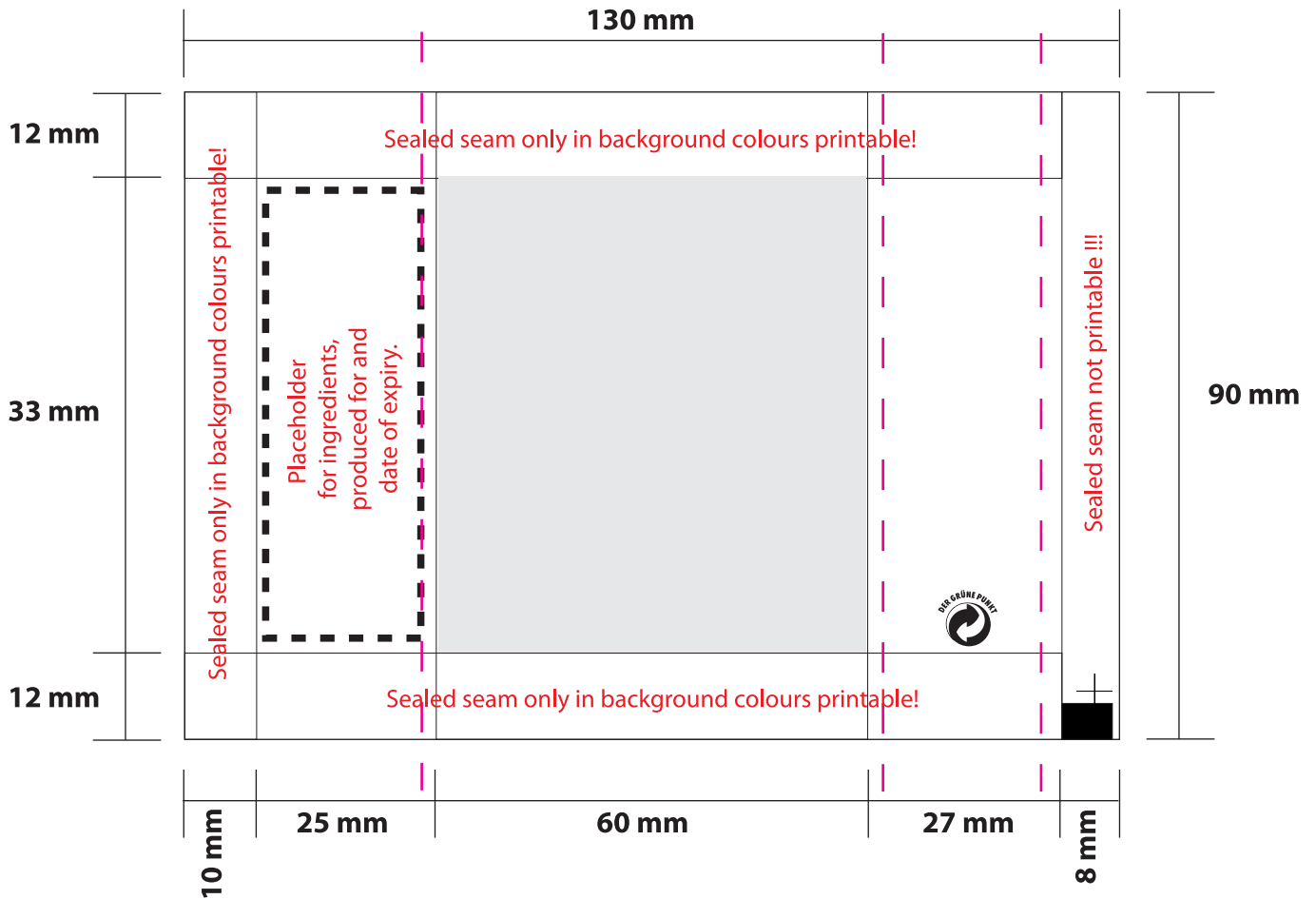
maximum: **flex print** 120 lpi (48 L/cm), **pad printing** 300 lpi (120L/cm), **offset** 180 lpi (72 L/cm)



In accordance with the European Union Regulation No. 178/2002 for the improvement of food security we provide our products with a manufacturer reference (back tracking).
 The final customer, dealer or agency can determine who is to be indicated as circulator on the product packing or if the manufacturer is to be named.
 We have to label all products with: Table of contents and expiration date, as information for the consumer



Layout Promotion bag 60 x 90 mm white square 6



File format:

EPS, AI, FH, Tiff, INDD, Mac Data if possible PC-compatible

Data:

Graphics and **text** have to be converted in vectors, please embed **pictures** and include the original data. Rendition 1:1: line motives in 1200 dpi and half-tone pictures in 300 dpi.
Graphics, clip arts etc. have to be composed in paths and should be capable for editing.

Colours:



Indicate pure colours as **Pantone C** or **HKS K, 4c euro scale prints** in %-values

Important: For 4c euro scale we send you a binding colour proof via mail.

(additional costs for the proof: € 60,-)

Printing colours are always translucent, to get covering colours on transparent films, they have to be deposited with white. Use our white squares!

Fonts:

Texts have to be converted in vectors to avoid the installation of non-operating fonts. If this is not possible, please send the fonts (only PC fonts)

Raster width



maximum: **flex print** 120 lpi (48 L/cm), **pad printing** 300 lpi (120L/cm),
offset 180 lpi (72 L/cm)



In accordance with the European Union Regulation No. 178/2002 for the improvement of food security we provide our products with a manufacturer reference (back tracking).
The final customer, dealer or agency can determine who is to be indicated as circulator on the product packing or if the manufacturer is to be named.
We have to label all products with: Table of contents and expiration date, as information for the consumer

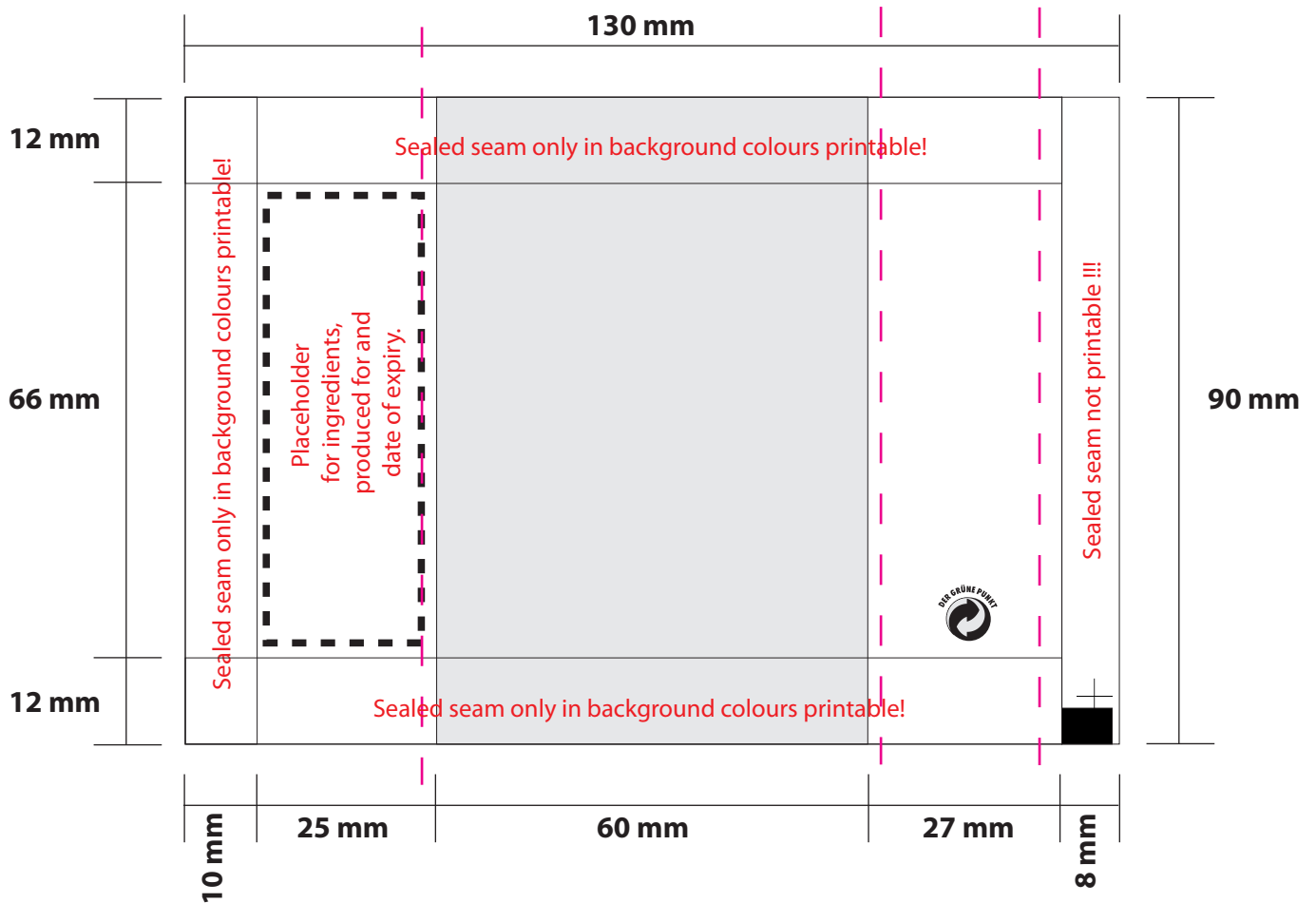


Layout

Promotion bag

60 x 90 mm

white square 2



File format:

EPS, AI, FH, Tiff, INDD, Mac Data if possible PC-compatible

Data:

Graphics and **text** have to be converted in vectors, please embed **pictures** and include the original data. Rendition 1:1: line motives in 1200 dpi and half-tone pictures in 300 dpi.
Graphics, clip arts etc. have to be composed in paths and should be capable for editing.

Colours:



Indicate pure colours as **Pantone C** or **HKS K, 4c euro scale prints** in %-values

Important: For 4c euro scale we send you a binding colour proof via mail.

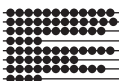
(additional costs for the proof: € 60,-)

Printing colours are always translucent, to get covering colours on transparent films, they have to be deposited with white. Use our white squares!

Fonts:

Texts have to be converted in vectors to avoid the installation of non-operating fonts. If this is not possible, please send the fonts (only PC fonts)

Raster width



maximum: **flex print** 120 lpi (48 L/cm), **pad printing** 300 lpi (120L/cm),
offset 180 lpi (72 L/cm)



In accordance with the European Union Regulation No. 178/2002 for the improvement of food security we provide our products with a manufacturer reference (back tracking).
 The final customer, dealer or agency can determine who is to be indicated as circulator on the product packing or if the manufacturer is to be named.
 We have to label all products with: Table of contents and expiration date, as information for the consumer

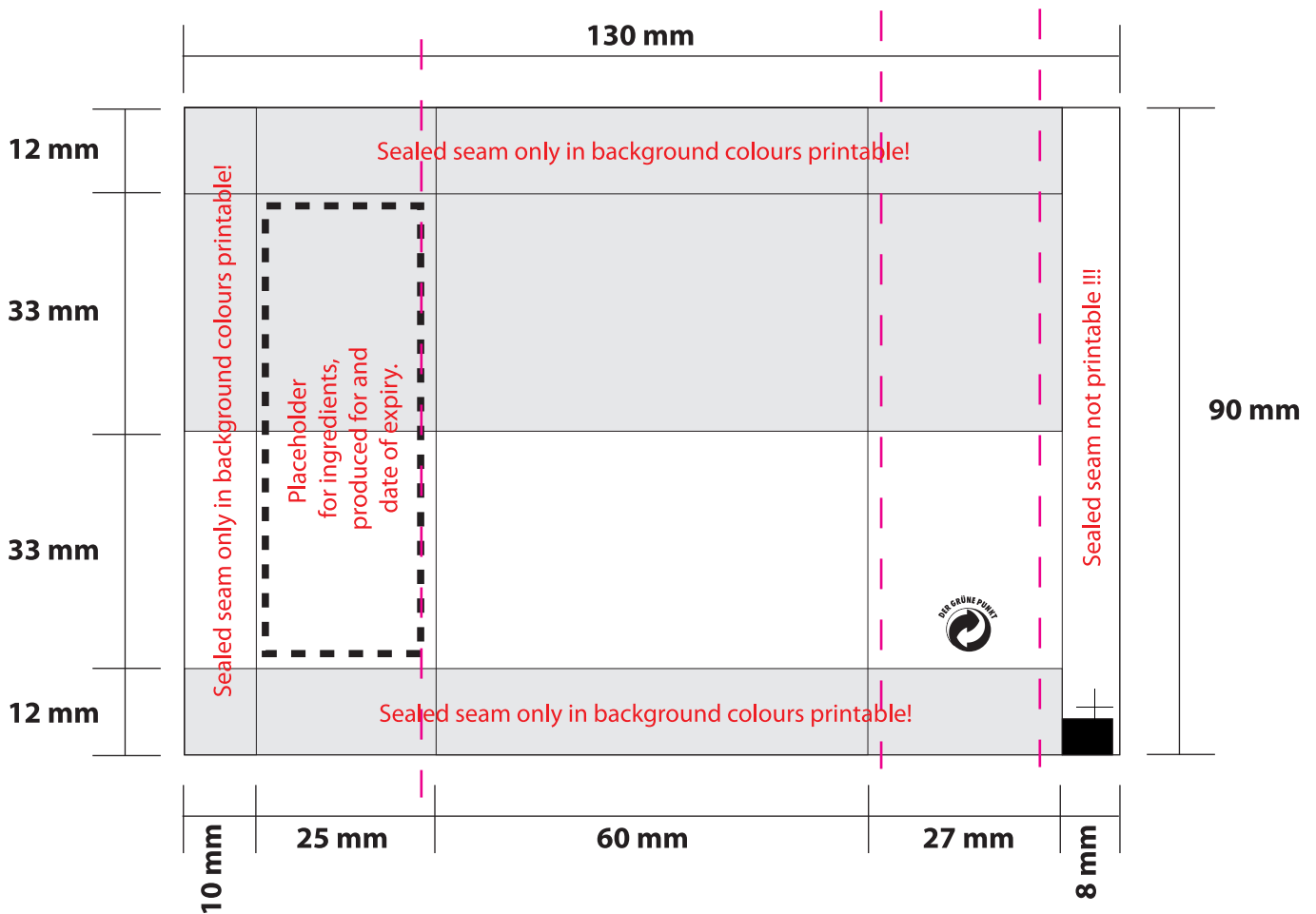


Layout

Promotion bag

60 x 90 mm

white square 3



File format:

EPS, AI, FH, Tiff, INDD, Mac Data if possible PC-compatible

Data:

Graphics and **text** have to be converted in vectors, please embed **pictures** and include the original data. Rendition 1:1: line motives in 1200 dpi and half-tone pictures in 300 dpi.
Graphics, clip arts etc. have to be composed in paths and should be capable for editing.

Colours:



Indicate pure colours as **Pantone C** or **HKS K, 4c euro scale prints** in %-values

Important: For 4c euro scale we send you a binding colour proof via mail.

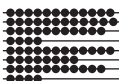
(additional costs for the proof: € 60,-)

Printing colours are always translucent, to get covering colours on transparent films, they have to be deposited with white. Use our white squares!

Fonts:

Texts have to be converted in vectors to avoid the installation of non-operating fonts. If this is not possible, please send the fonts (only PC fonts)

Raster width



maximum: **flex print** 120 lpi (48 L/cm), **pad printing** 300 lpi (120L/cm), **offset** 180 lpi (72 L/cm)



In accordance with the European Union Regulation No. 178/2002 for the improvement of food security we provide our products with a manufacturer reference (back tracking).
 The final customer, dealer or agency can determine who is to be indicated as circulator on the product packing or if the manufacturer is to be named.
 We have to label all products with: Table of contents and expiration date, as information for the consumer

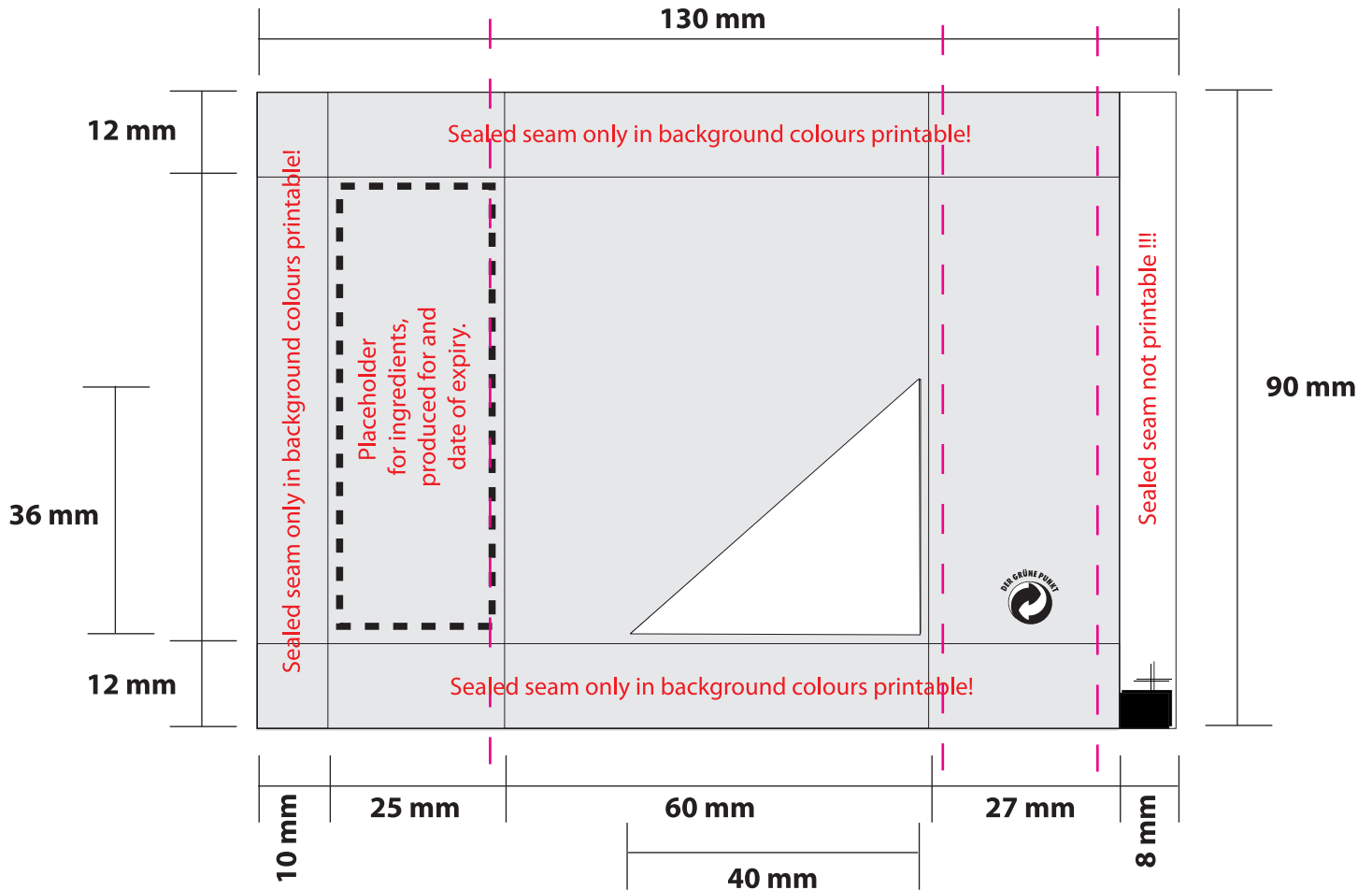


Layout

Promotion bag

60 x 90 mm

white square 4



File format:

EPS, AI, FH, Tiff, INDD, Mac Data if possible PC-compatible

Data:

Graphics and **text** have to be converted in vectors, please embed **pictures** and include the original data. Rendition 1:1: line motives in 1200 dpi and half-tone pictures in 300 dpi.
Graphics, clip arts etc. have to be composed in paths and should be capable for editing.

Colours:



Indicate pure colours as **Pantone C** or **HKS K, 4c euro scale prints** in %-values

Important: For 4c euro scale we send you a binding colour proof via mail.

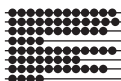
(additional costs for the proof: € 60,-)

Printing colours are always translucent, to get covering colours on transparent films, they have to be deposited with white. Use our white squares!

Fonts:

Texts have to be converted in vectors to avoid the installation of non-operating fonts. If this is not possible, please send the fonts (only PC fonts)

Raster width



maximum: **flex print** 120 lpi (48 L/cm), **pad printing** 300 lpi (120L/cm), **offset** 180 lpi (72 L/cm)



In accordance with the European Union Regulation No. 178/2002 for the improvement of food security we provide our products with a manufacturer reference (back tracking).
 The final customer, dealer or agency can determine who is to be indicated as circulator on the product packing or if the manufacturer is to be named.
 We have to label all products with: Table of contents and expiration date, as information for the consumer

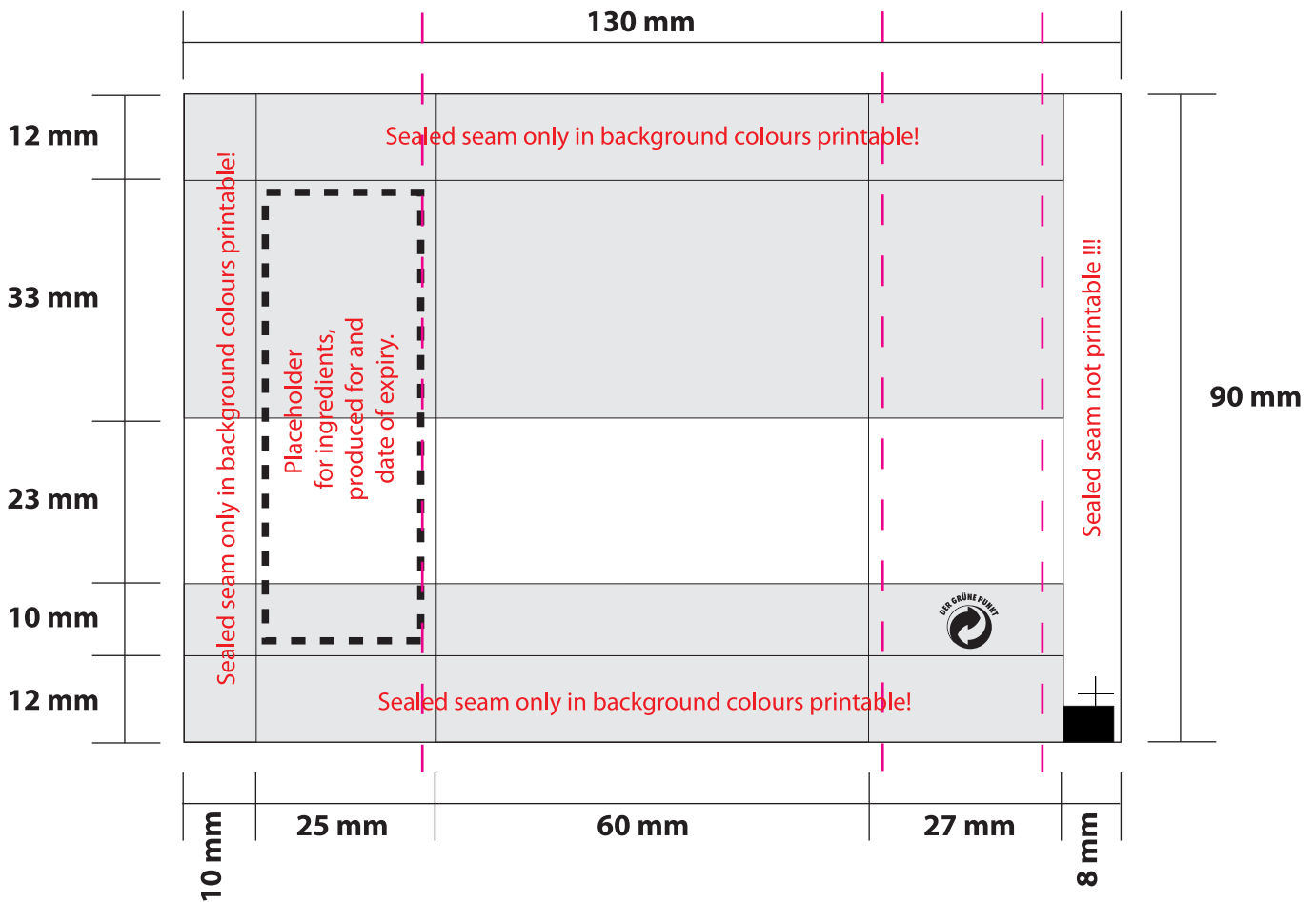


Layout

Promotion bag

60 x 90 mm

white square 5



File format:

EPS, AI, FH, Tiff, INDD, Mac Data if possible PC-compatible

Data:

Graphics and **text** have to be converted in vectors, please embed **pictures** and include the original data. Rendition 1:1: line motives in 1200 dpi and half-tone pictures in 300 dpi.
Graphics, clip arts etc. have to be composed in paths and should be capable for editing.

Colours:



Indicate pure colours as **Pantone C** or **HKS K, 4c euro scale prints** in %-values

Important: For 4c euro scale we send you a binding colour proof via mail.

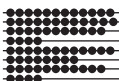
(additional costs for the proof: € 60,-)

Printing colours are always translucent, to get covering colours on transparent films, they have to be deposited with white. Use our white squares!

Fonts:

Texts have to be converted in vectors to avoid the installation of non-operating fonts. If this is not possible, please send the fonts (only PC fonts)

Raster width



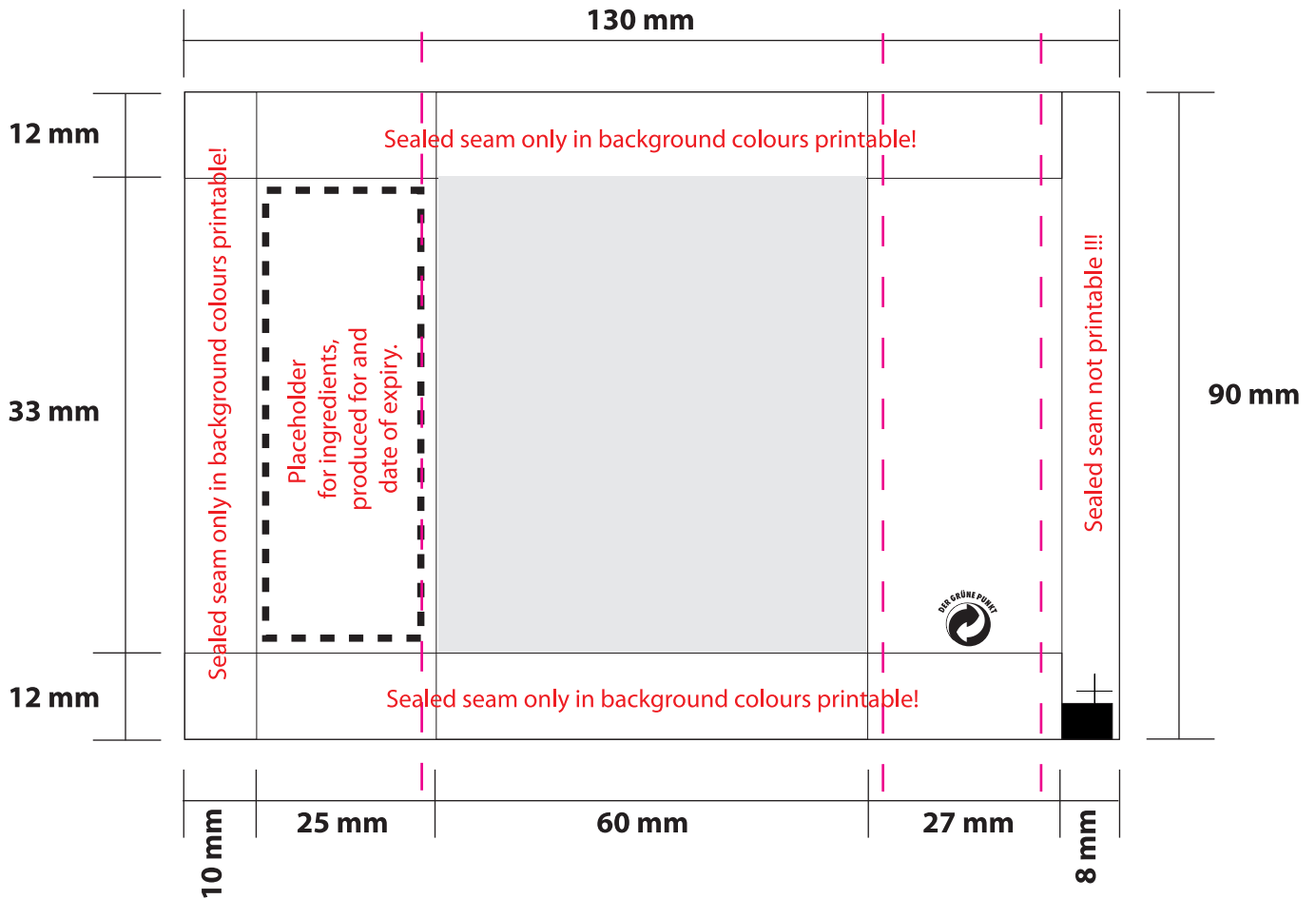
maximum: **flex print** 120 lpi (48 L/cm), **pad printing** 300 lpi (120L/cm), **offset** 180 lpi (72 L/cm)



In accordance with the European Union Regulation No. 178/2002 for the improvement of food security we provide our products with a manufacturer reference (back tracking).
 The final customer, dealer or agency can determine who is to be indicated as circulator on the product packing or if the manufacturer is to be named.
 We have to label all products with: Table of contents and expiration date, as information for the consumer



Layout Promotion bag 60 x 90 mm white square 6



File format:

EPS, AI, FH, Tiff, INDD, Mac Data if possible PC-compatible

Data:

Graphics and **text** have to be converted in vectors, please embed **pictures** and include the original data. Rendition 1:1: line motives in 1200 dpi and half-tone pictures in 300 dpi.
Graphics, clip arts etc. have to be composed in paths and should be capable for editing.

Colours:



Indicate pure colours as **Pantone C** or **HKS K, 4c euro scale prints** in %-values

Important: For 4c euro scale we send you a binding colour proof via mail.

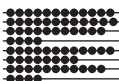
(additional costs for the proof: € 60,-)

Printing colours are always translucent, to get covering colours on transparent films, they have to be deposited with white. Use our white squares!

Fonts:

Texts have to be converted in vectors to avoid the installation of non-operating fonts. If this is not possible, please send the fonts (only PC fonts)

Raster width



maximum: **flex print** 120 lpi (48 L/cm), **pad printing** 300 lpi (120L/cm), **offset** 180 lpi (72 L/cm)



In accordance with the European Union Regulation No. 178/2002 for the improvement of food security we provide our products with a manufacturer reference (back tracking).
The final customer, dealer or agency can determine who is to be indicated as circulator on the product packing or if the manufacturer is to be named.
We have to label all products with: Table of contents and expiration date, as information for the consumer

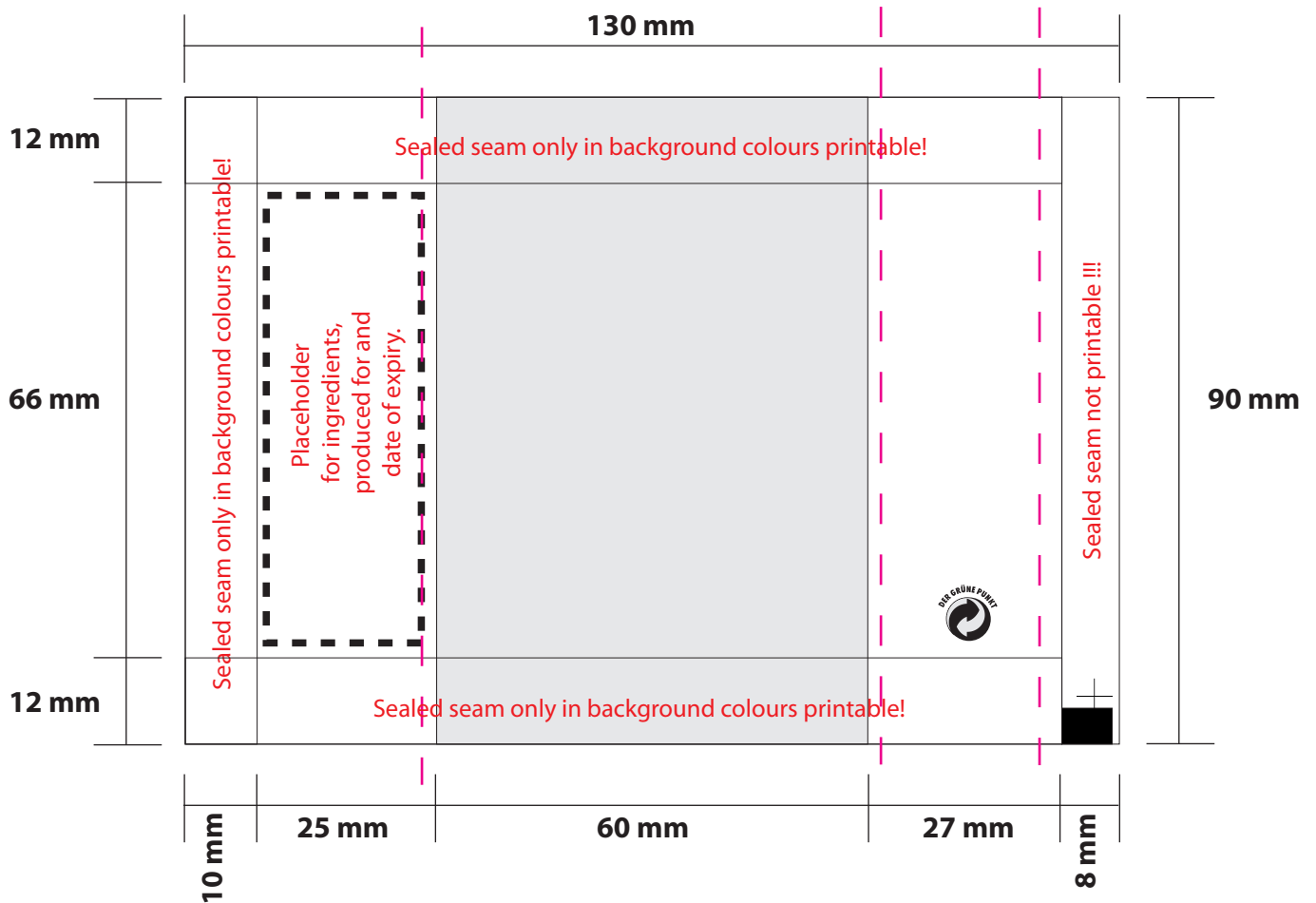


Layout

Promotion bag

60 x 90 mm

white square 2



File format:

EPS, AI, FH, Tiff, INDD, Mac Data if possible PC-compatible

Data:

Graphics and **text** have to be converted in vectors, please embed **pictures** and include the original data. Rendition 1:1: line motives in 1200 dpi and half-tone pictures in 300 dpi.
Graphics, clip arts etc. have to be composed in paths and should be capable for editing.

Colours:



Indicate pure colours as **Pantone C** or **HKS K, 4c euro scale prints** in %-values

Important: For 4c euro scale we send you a binding colour proof via mail.

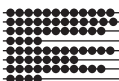
(additional costs for the proof: € 60,-)

Printing colours are always translucent, to get covering colours on transparent films, they have to be deposited with white. Use our white squares!

Fonts:

Texts have to be converted in vectors to avoid the installation of non-operating fonts. If this is not possible, please send the fonts (only PC fonts)

Raster width



maximum: **flex print** 120 lpi (48 L/cm), **pad printing** 300 lpi (120L/cm),
offset 180 lpi (72 L/cm)



In accordance with the European Union Regulation No. 178/2002 for the improvement of food security we provide our products with a manufacturer reference (back tracking).
The final customer, dealer or agency can determine who is to be indicated as circulator on the product packing or if the manufacturer is to be named.
We have to label all products with: Table of contents and expiration date, as information for the consumer

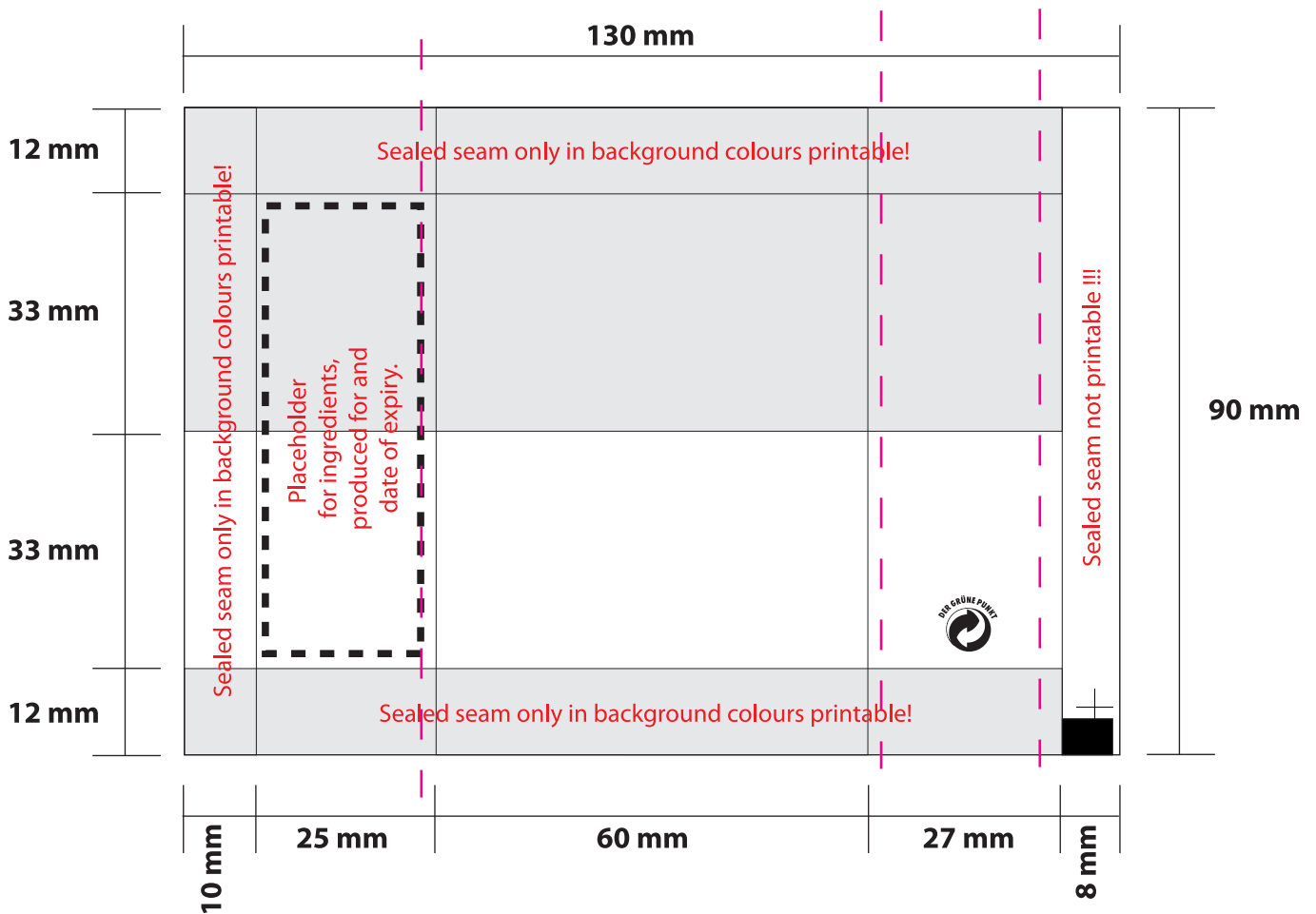


Layout

Promotion bag

60 x 90 mm

white square 3



File format:

EPS, AI, FH, Tiff, INDD, Mac Data if possible PC-compatible

Data:

Graphics and **text** have to be converted in vectors, please embed **pictures** and include the original data. Rendition 1:1: line motives in 1200 dpi and half-tone pictures in 300 dpi.
Graphics, clip arts etc. have to be composed in paths and should be capable for editing.

Colours:



Indicate pure colours as **Pantone C** or **HKS K, 4c euro scale prints** in %-values

Important: For 4c euro scale we send you a binding colour proof via mail.

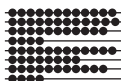
(additional costs for the proof: € 60,-)

Printing colours are always translucent, to get covering colours on transparent films, they have to be deposited with white. Use our white squares!

Fonts:

Texts have to be converted in vectors to avoid the installation of non-operating fonts. If this is not possible, please send the fonts (only PC fonts)

Raster width



maximum: **flex print** 120 lpi (48 L/cm), **pad printing** 300 lpi (120L/cm),
offset 180 lpi (72 L/cm)



In accordance with the European Union Regulation No. 178/2002 for the improvement of food security we provide our products with a manufacturer reference (back tracking).
 The final customer, dealer or agency can determine who is to be indicated as circulator on the product packing or if the manufacturer is to be named.
 We have to label all products with: Table of contents and expiration date, as information for the consumer

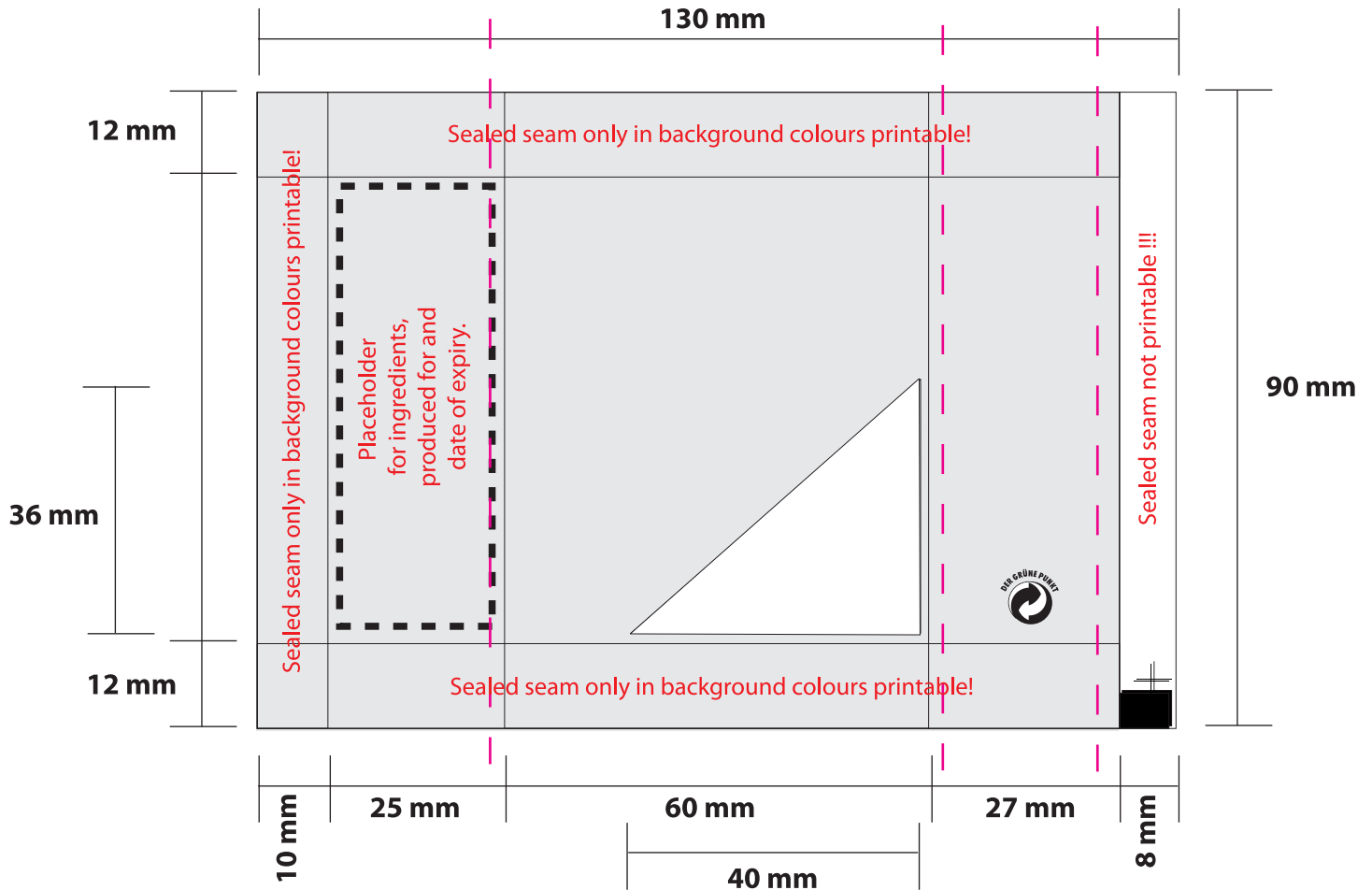


Layout

Promotion bag

60 x 90 mm

white square 4



File format:

EPS, AI, FH, Tiff, INDD, Mac Data if possible PC-compatible

Data:

Graphics and **text** have to be converted in vectors, please embed **pictures** and include the original data. Rendition 1:1: line motives in 1200 dpi and half-tone pictures in 300 dpi.
Graphics, clip arts etc. have to be composed in paths and should be capable for editing.

Colours:



Indicate pure colours as **Pantone C** or **HKS K, 4c euro scale prints** in %-values

Important: For 4c euro scale we send you a binding colour proof via mail.

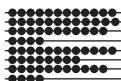
(additional costs for the proof: € 60,-)

Printing colours are always translucent, to get covering colours on transparent films, they have to be deposited with white. Use our white squares!

Fonts:

Texts have to be converted in vectors to avoid the installation of non-operating fonts. If this is not possible, please send the fonts (only PC fonts)

Raster width



maximum: **flex print** 120 lpi (48 L/cm), **pad printing** 300 lpi (120L/cm), **offset** 180 lpi (72 L/cm)



In accordance with the European Union Regulation No. 178/2002 for the improvement of food security we provide our products with a manufacturer reference (back tracking).
 The final customer, dealer or agency can determine who is to be indicated as circulator on the product packing or if the manufacturer is to be named.
 We have to label all products with: Table of contents and expiration date, as information for the consumer

